

VILLA KAMPOS

GREECE | PAROS



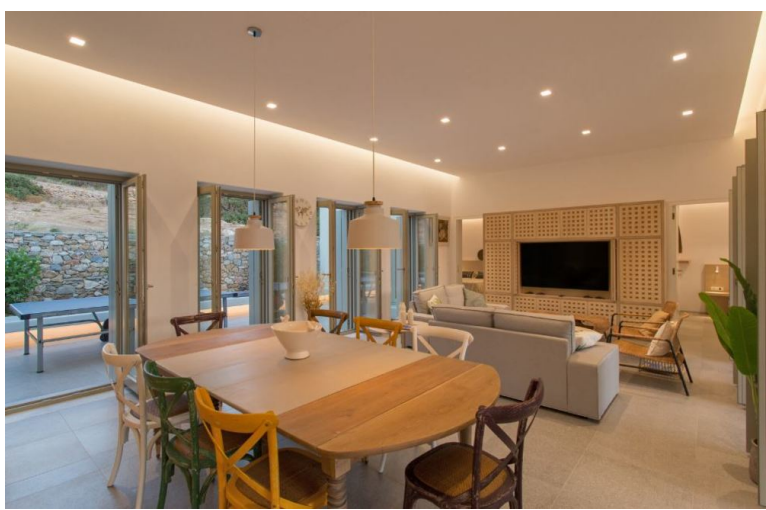
5 Bedrooms



10 Guests



£8190 - £14150 / week



- > Air Conditioning
- > Dogs allowed
- > Family villa
- > For large groups
- > Near shops/restaurants
- > Near the airport
- > Near the beach
- > Romantic villa
- > Secluded location
- > Table tennis
- > With cot / highchair
- > With WIFI

"Set in a rural area surrounded by hills and olive groves on the Greek island of Paros, this beautifully designed contemporary villa with pool provides an ideal secluded spot in which to relax and enjoy the magnificent Mediterranean natural surroundings!"

Despite the profound sense of peace and seclusion, the nearest beach and village are only 3 km away from this beautiful property provides luxury and comfort, in a truly Mediterranean ambience. A main house and 2 separate annexes offer 5 en suite bedrooms accommodating up to 10 guests. The private grounds are spacious and equipped with all you need to enjoy every moment of your stay.

ACCOMMODATION

(200 m²)

MAIN HOUSE

Ground floor/ pool level:

Entrance hall.

Living room/ dining area, TV, A/C, door to garden and pool.

Fully equipped kitchen.

Guest WC.

Bedroom 1: King/ Twin beds, en suite shower room, TV, A/C, mini fridge, safe box, door to terrace.

Bedroom 2: Double bed, en suite shower room, TV, A/C, mini fridge, safe box, door to terrace.

Bedroom 3: King/ Twin beds, en suite shower room, TV, A/C, mini fridge, safe box, door to terrace.

GARDEN ANNEX 1:

Bedroom 4: Double bed, private entrance, en suite shower room, TV, A/C, mini fridge, safe box, door to terrace.

GARDEN ANNEX 2:

Bedroom 5: Double bed, private entrance, en suite shower room, TV, A/C, mini fridge, safe box, door to terrace.

Separate staff accommodation with twin bedroom and en suite shower room.

Grounds:

Large flat grounds comprising a very spacious terrace with private pool (Roman steps), sun loungers, 3 covered terraces and pergolas, lounge areas, summer kitchen with portable gas BBQ and table for al fresco dining. Table tennis. Private parking.

DISTANCES

Paros airport: 22 km.

Paroikia (island's capital): 12.5 km.

Ambelas village and beach: 3 km.

Naoussa: 4.3 km.